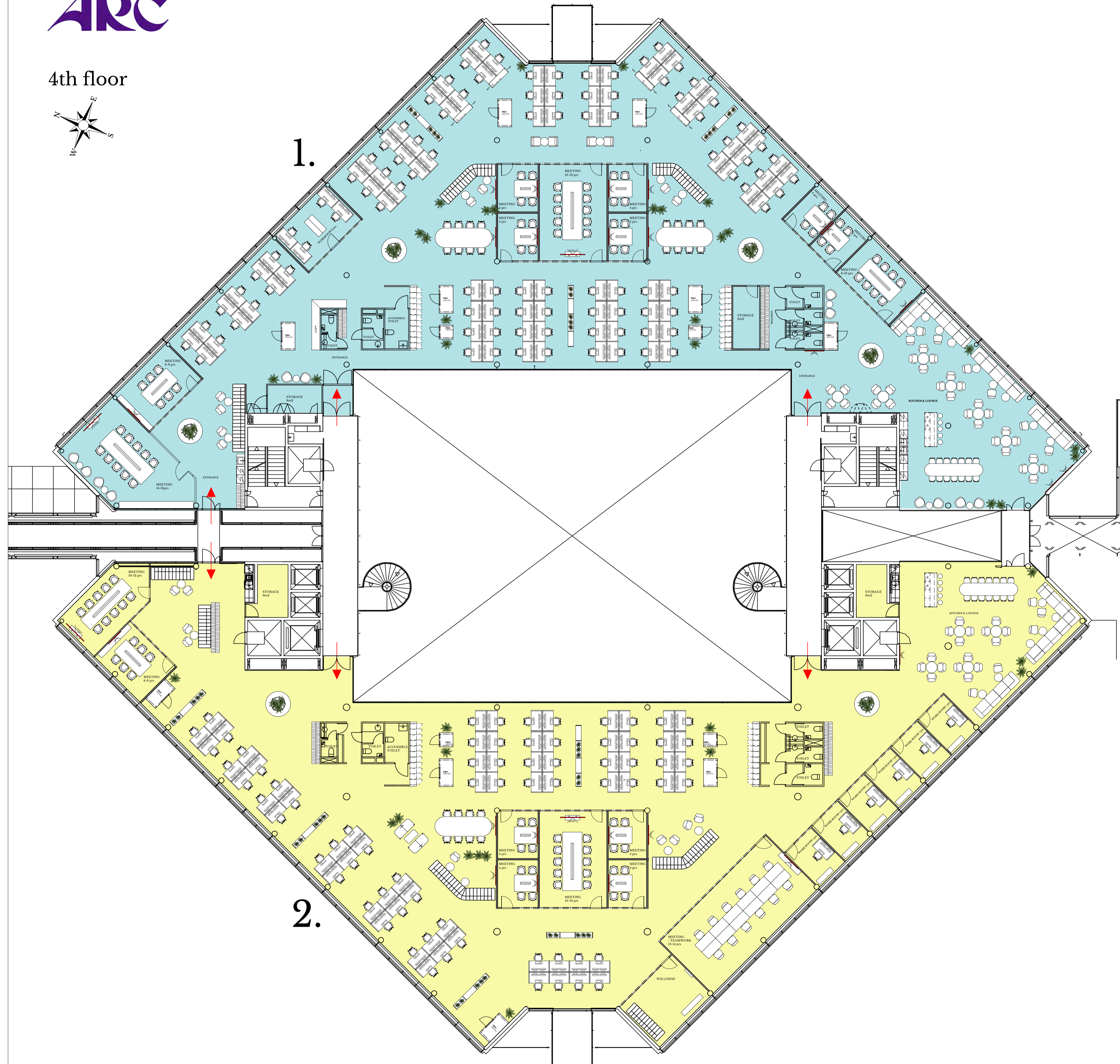
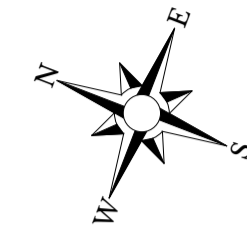


Floor sizes & furniture are indicative.



4th floor



### 1.

**4th floor 1157m<sup>2</sup>**

- Work stations total 102 pcs
- Work rooms (4person) total 1 pcs
- Work stations open space 98 pcs
- Meeting rooms 4 prs total 6 pcs
- Meeting rooms 6-8 prs total 1 pcs
- Meeting rooms 8-10 prs total 1 pcs
- Meeting rooms 10-12 prs total 2 pcs
- Ad Hoc Area 12 prs total 2 pcs
- Storage 8 m2 total 2 pcs
- Toilet total 6 pcs
- Kitchen & Lounge 68 prs

### 2.

**4th floor 1170m<sup>2</sup>**

- Work stations total 76 pcs
- Work rooms (1person) total 6 pcs
- Work stations open space 70 pcs
- Meeting rooms 4 prs total 4 pcs
- Meeting rooms 6-8 prs total 1 pcs
- Meeting rooms 10-12 prs total 2 pcs
- Meeting room / Teamwork room 12-14 prs total 1 pcs
- Ad Hoc Area 18 prs total 1 pcs
- Ad Hoc Area 10 prs total 1 pcs
- Wellnessroom total 1 pcs
- Storage 9 m2 total 2 pcs
- Toilet total 6 pcs
- Kitchen & Lounge 50 prs