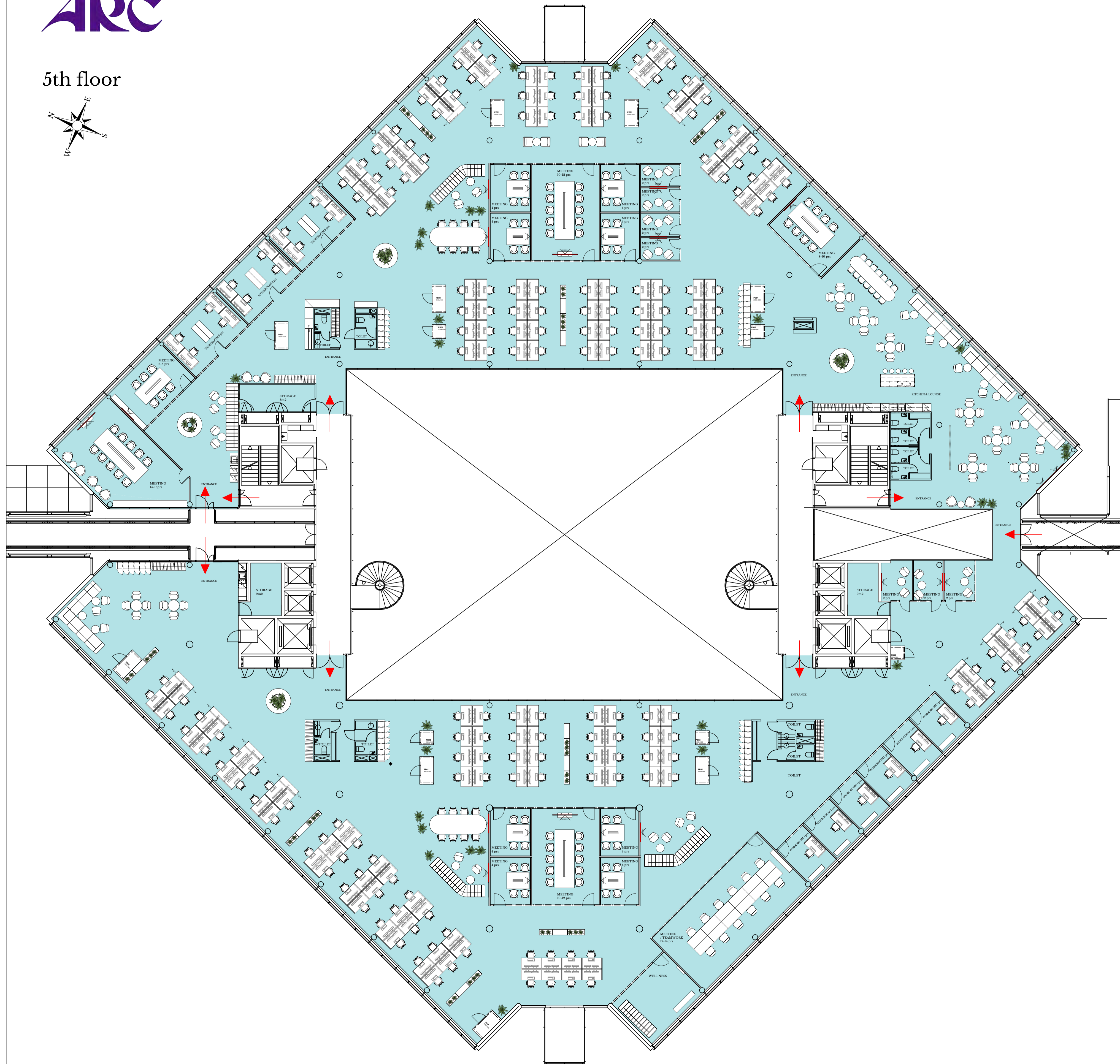
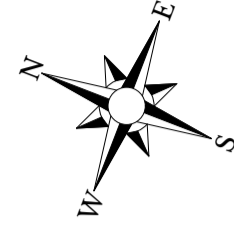


Floor sizes & furniture are indicative.



5th floor



1.

5th floor 2335m²

- Work stations total 192 pcs
- Work rooms (1person) total 6 pcs
- Work rooms (4person) total 3 pcs
- Work stations open space 174 pcs
- Meeting rooms 2 prs total 7 pcs
- Meeting rooms 4 prs total 8 pcs
- Meeting rooms 6-8 prs total 1 pcs
- Meeting rooms 8-10 prs total 1 pcs
- Meeting rooms 10-12 prs total 2 pcs
- Meeting rooms 12-14 prs total 1 pcs
- Meeting / Teamwork rooms 12-14 prs total 1 pcs
- Ad Hoc Area 12-16 prs total 3pcs
- Storage 8 m2 total 1 pcs
- Storage 9 m2 total 2 pcs
- Toilet total 10 pcs
- Kitchen & Lounge 70 prs total 1 pcs
- Kitchen & Lounge 16 prs total 1 pcs